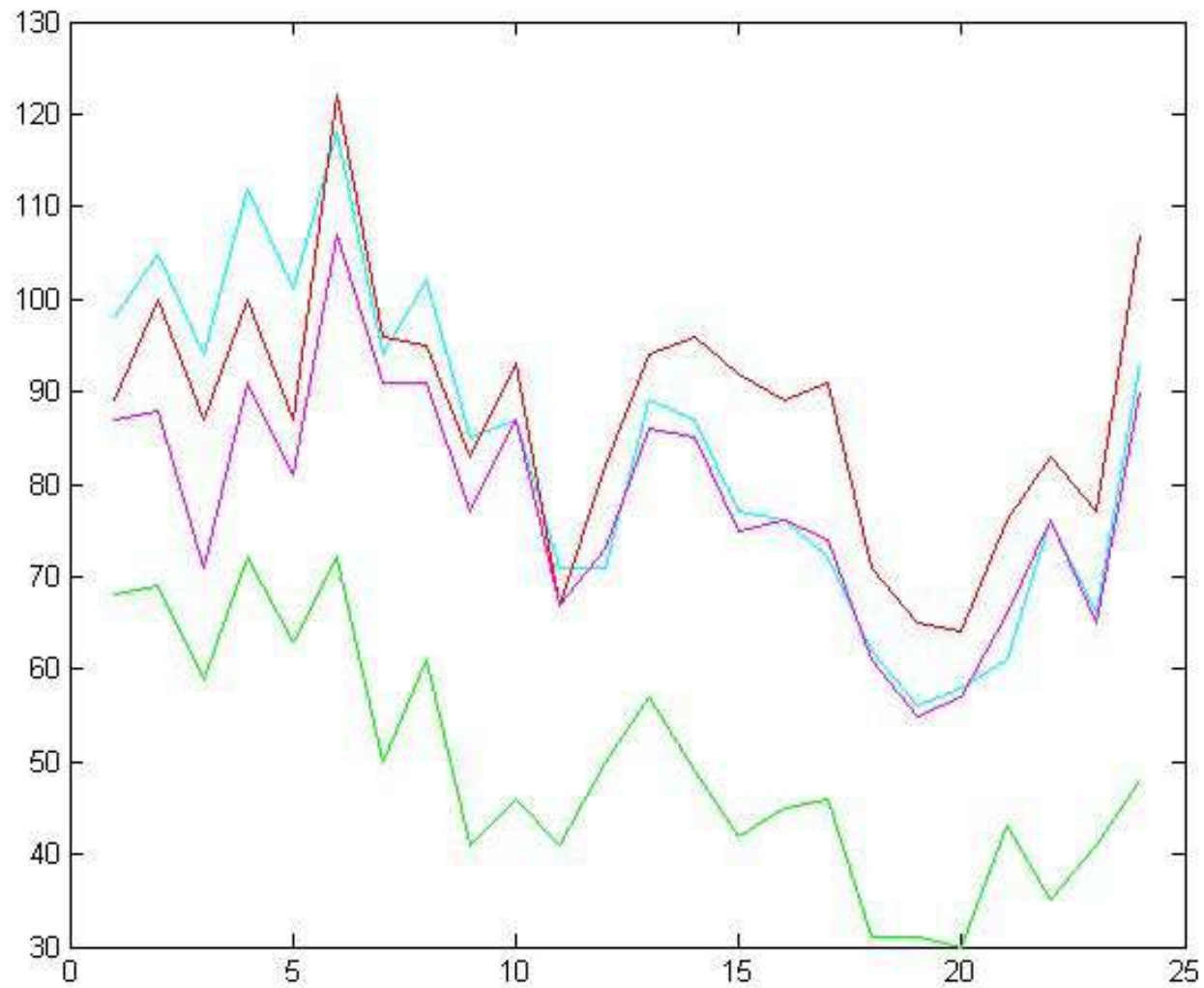
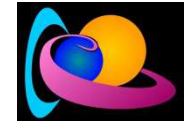
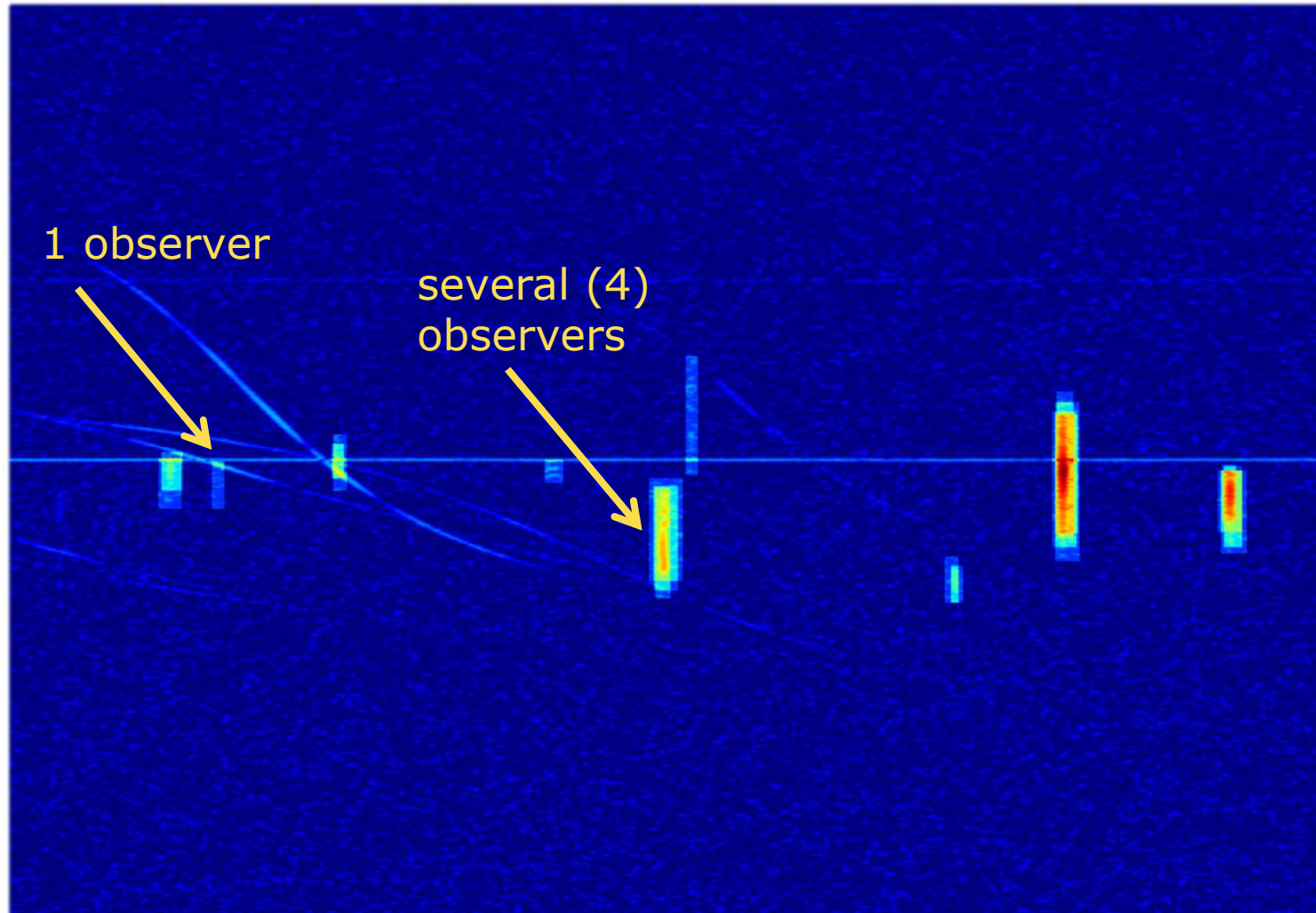
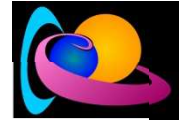


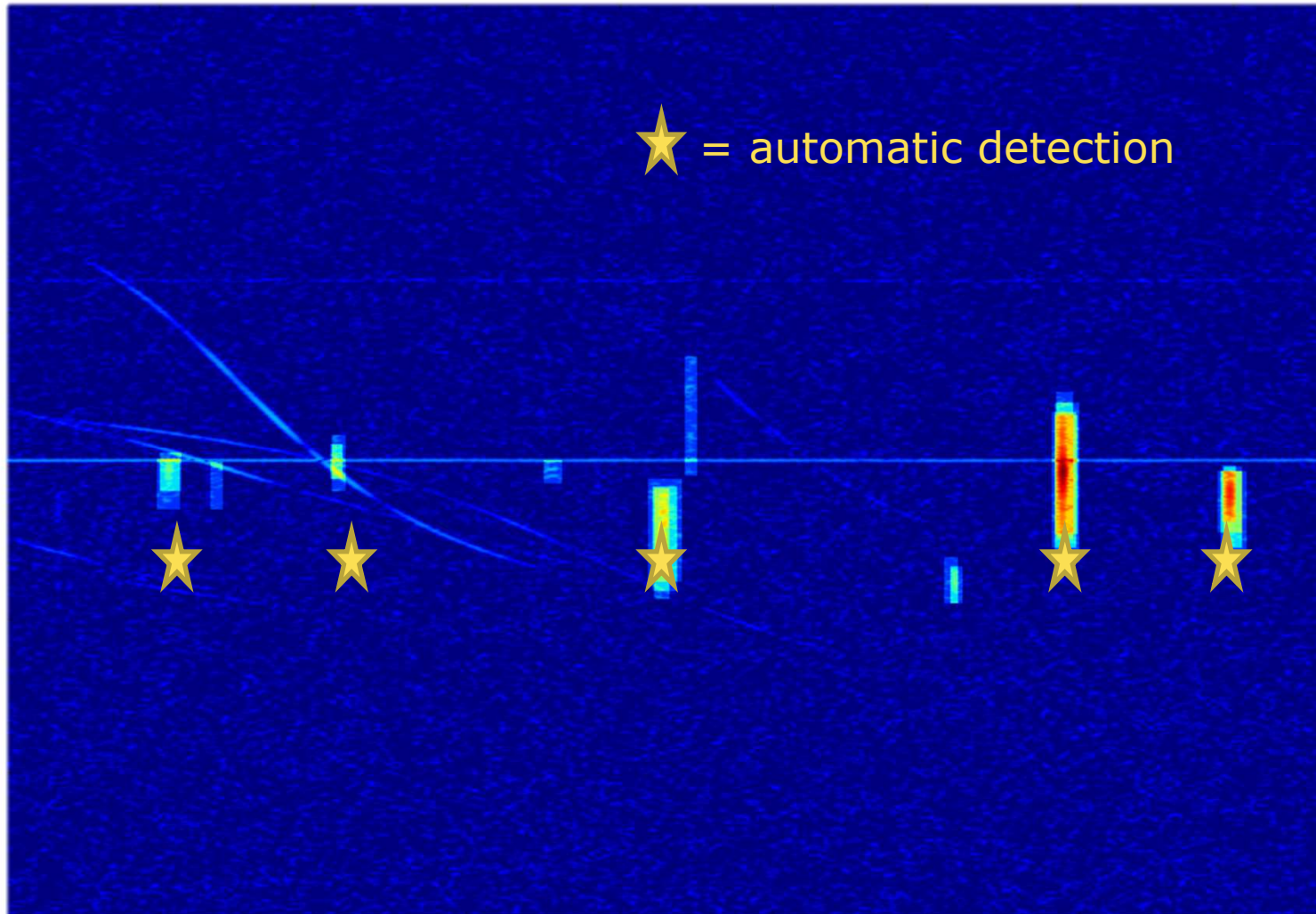
# Comparison: manual & automatic counts



# Comparison: manual & automatic counts



# Comparison: manual & automatic counts

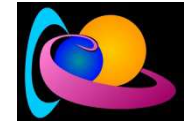


# Comparison: manual & automatic counts



		Automatically detected	
		Yes	No
Manually counted	Yes	True positive	False negative
	No	False positive	/

# Comparison: manual & automatic counts



- Current status:
  - We get the true and false positives. →
  - False negatives (counted manually, but not automatically detected) will be implemented later.
- Once the validation software is fully implemented, we can investigate why
  - certain meteors are not detected, and
  - certain non-meteors are detected ...to improve the detection algorithm.

Total automatically detected	1219
<b>At least 1 observer</b>	
true positives	1073
false positives	146
<b>At least 2 observers</b>	
true positives	993
false positives	226
<b>At least 3 observers</b>	
true positives	887
false positives	332
<b>At least 4 observers</b>	
true positives	626
false positives	593